

# HELP N-COM EASYSET

Operating instructions for the N-Com Easyset system

<b>USING "N-COM EASYSET"</b> .....	<b>2</b>
UPDATING "N-COM EASYSET" .....	2
SELECTING THE LANGUAGE OF "N-COM EASYSET" .....	2
<b>WELCOME</b> .....	<b>3</b>
<b>DEVICE RECOGNITION</b> .....	<b>3</b>
<b>UPDATING THE FIRMWARE</b> .....	<b>4</b>
CHANGING THE LANGUAGE OF THE VOICE MESSAGES.....	6
<b>RESTORING THE FIRMWARE</b> .....	<b>9</b>
<b>DEVICE SETTINGS</b> .....	<b>10</b>
BASE .....	10
SPEED DIALLING .....	10
FM RADIO .....	11
<b>MISCELLANEOUS</b> .....	<b>12</b>

## USING "N-COM EASYSET"

With "N-Com Easyset" you can configure your N-Com system by setting a few audio parameters as you like, presetting your favourite radio station, updating the firmware, etc.

Proceed as follows:

- 1) Turn off the N-Com system installed on the helmet
- 2) Start the N-Com Easyset program
- 3) When requested, connect the N-Com system to the computer

To stop using N-Com Easyset, close the application, disconnecting first the USB from the computer and then the connector connected to the helmet.

## UPDATING "N-COM EASYSET"

In case a program update is available, this information is provided when the program is started. It is recommended to always keep "N-Com Easyset" updated to the last available version in order to use all the functions as best as possible.

## SELECTING THE LANGUAGE OF "N-COM EASYSET"

To select the language of the N-Com Easyset program, click on the flag icon at the top right.



Img. 1

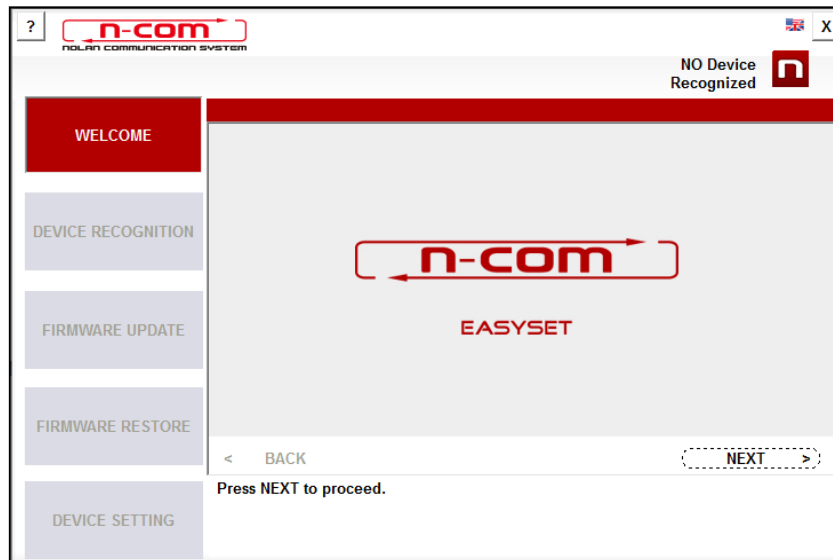
## WELCOME

Access screen to the N-Com Easyset program.

- 1) Turn off the N-Com system installed on the helmet;
- 2) Start the N-Com Easyset program: the **WELCOME** screen will appear.

**N.B.:** During this phase, the N-Com system, even if connected to the PC through a USB cable, is not recognised.

- 3) Click on "NEXT".



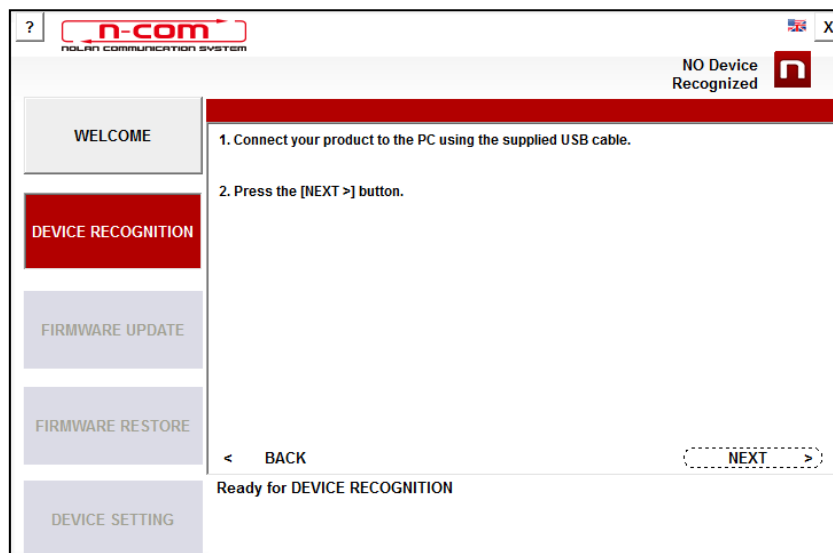
Img. 2

## DEVICE RECOGNITION

Screen for the recognition of the connected device.

Following the instructions provided, "N-Com Easyset" automatically identifies the connected N-Com system, thus ensuring installation of the right firmware and the adjustment of specific parameters.

In the screen **DEVICE RECOGNITION**, connect the N-Com system to the PC (if it has not already been done) and click on "NEXT".

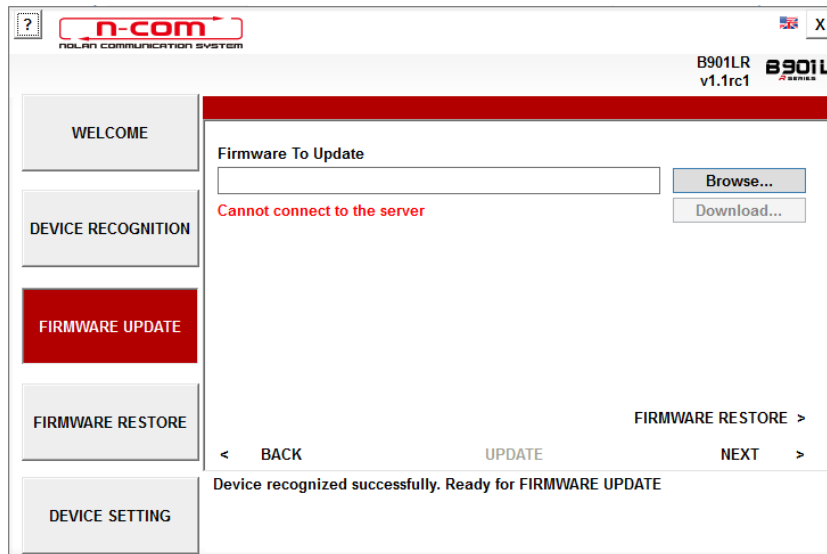


Img. 3

## UPDATING THE FIRMWARE

Screen for the firmware update.

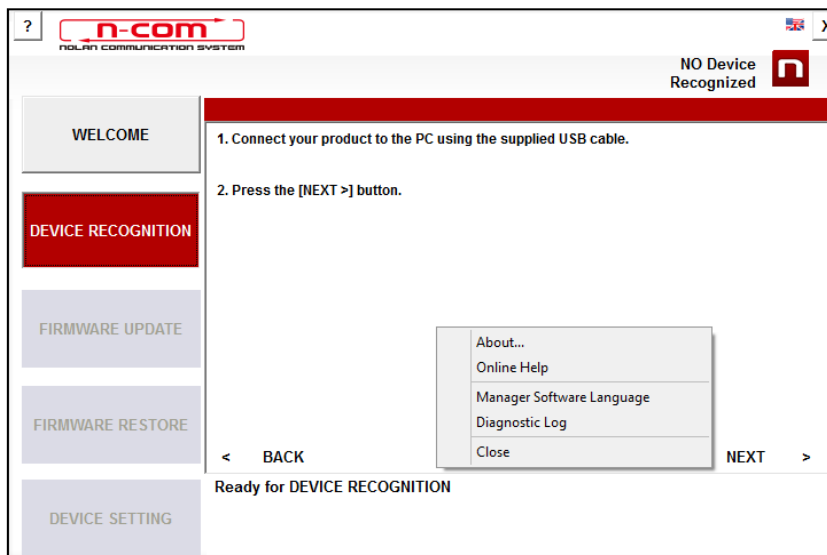
1. The N-Com connected system logo is displayed in the screen **FIRMWARE UPDATE** at the top right.



Img. 4

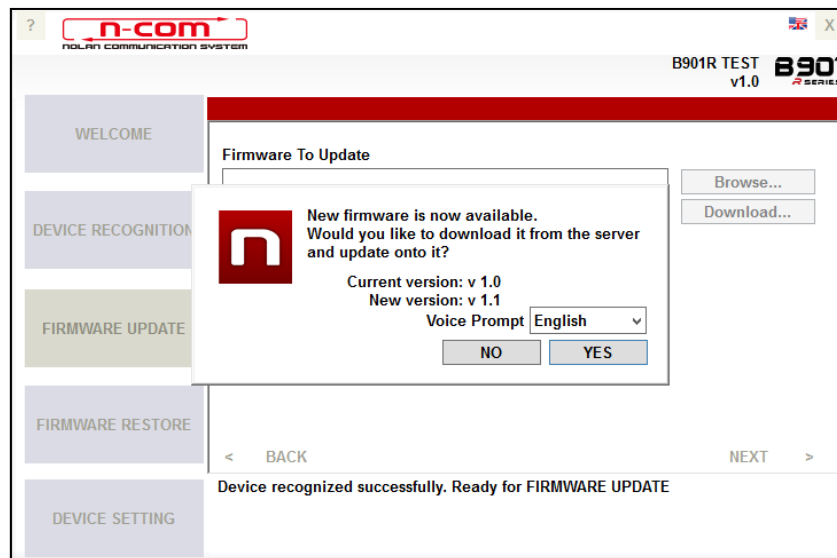
**Caution:** if the recognition phase of the N-Com system is unsuccessful, it is recommended to:

- Follow in detail the connection instructions in the screen **DEVICE RECOGNITION**.
- If the device is not recognised, close and restart the "N-Com Easyset" system and try again.
- If the device is still not recognised, contact the Customer Service at info@n-com.it for technical assistance. Indicate the DIAGNOSTIC LOG code: Right-click on the program screen, select "DIAGNOSTIC LOG" and select the displayed code.



Img. 5

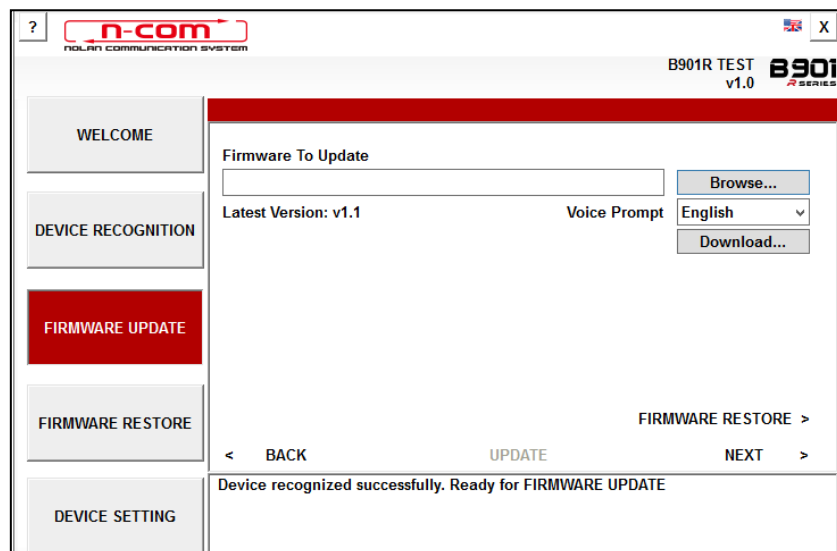
2. In case a firmware update is available, this information is displayed in a pop-up window. Select the desired language for the voice commands and press "YES" to confirm.



Img. 6

It is recommended to keep your N-Com system always updated with the last available version so as to use all the functions as best as possible.

3. The firmware update procedure will now begin.  
**IMPORTANT: Do not disconnect the N-Com system from the PC while the firmware is in the update phase. Do not close the N-Com Easyset program while the firmware is being updated.**
4. Once the procedure is finished, the updated firmware version is displayed at the top right, near the product logo.



Img. 7

5. To stop using N-Com Easyset, close the application, disconnecting first the USB from the computer and then the connector connected to the helmet.

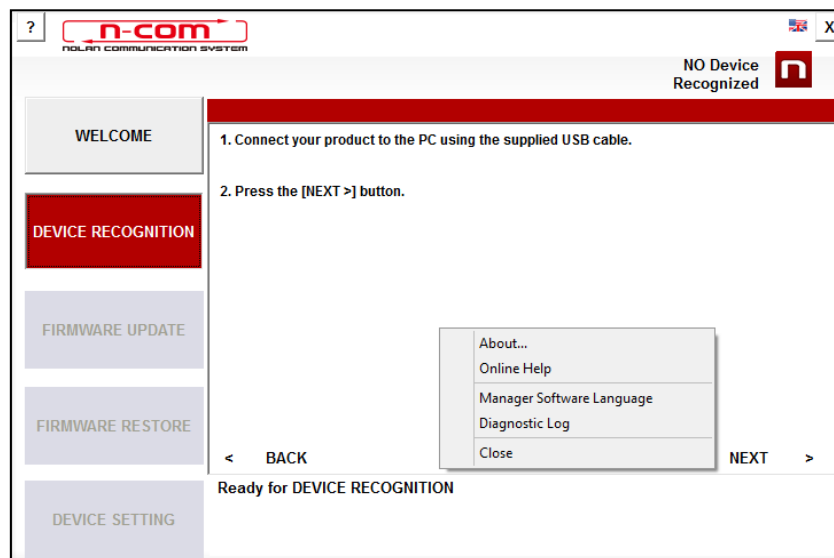
If the firmware update is not successful, check the error message displayed:

ERROR MESSAGE	CAUSE	SOLUTION
Damaged firmware	The selected firmware is not in the right format.	Select the specific firmware for your system.
Firmware not intended for [system name]	The selected firmware is not specific for the connected system	Select the specific firmware for your system.

It is also recommended to:

- make sure the N-Com system is not turned on
- verify that the N-Com system is properly connected to the computer through the USB cable supplied as standard equipment
- make sure that the selected firmware is specific for the connected N-Com system

If the problem persists, contact the Customer Service at info@n-com.it for technical assistance. Indicate the DIAGNOSTIC LOG code: Right-click on the program screen, select "DIAGNOSTIC LOG" and select the displayed code.



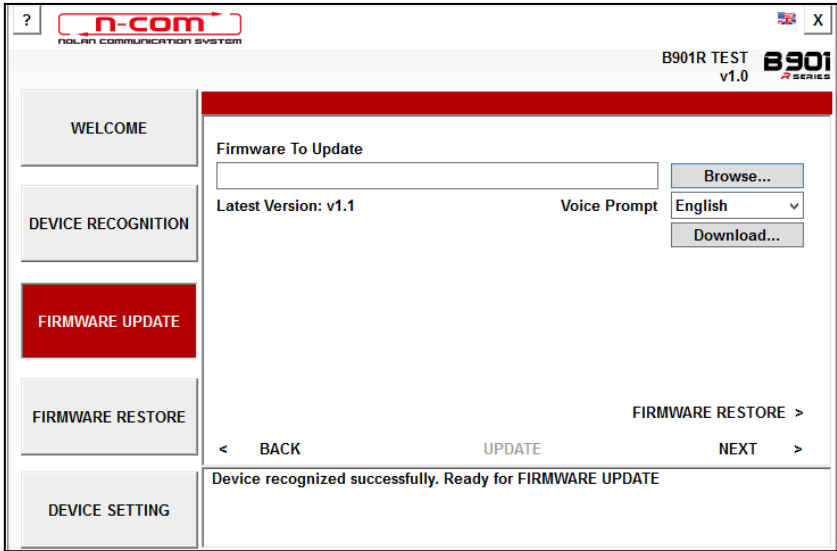
Img. 8

### CHANGING THE LANGUAGE OF THE VOICE MESSAGES

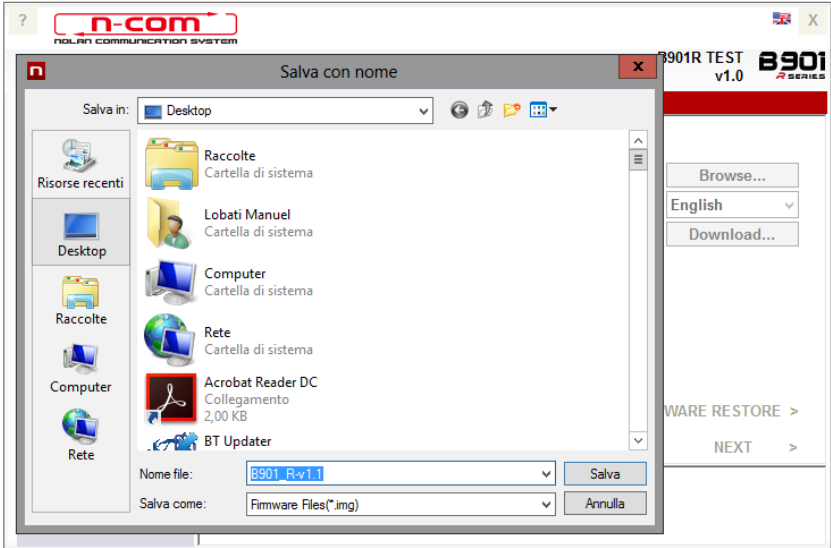
With N-Com Easyset you can change the language of the voice messages (Voice Prompt) even if your own Firmware is already updated to the latest version available on the server.

Proceed as follows:

1. Follow the procedure described above, step 1 to 4.
2. In the **FIRMWARE UPDATE** screen:
  - Select the language of the voice messages from the drop-down menu
  - Click on "**DOWNLOAD**" and select the folder in which to save the ".img" file on your own PC.

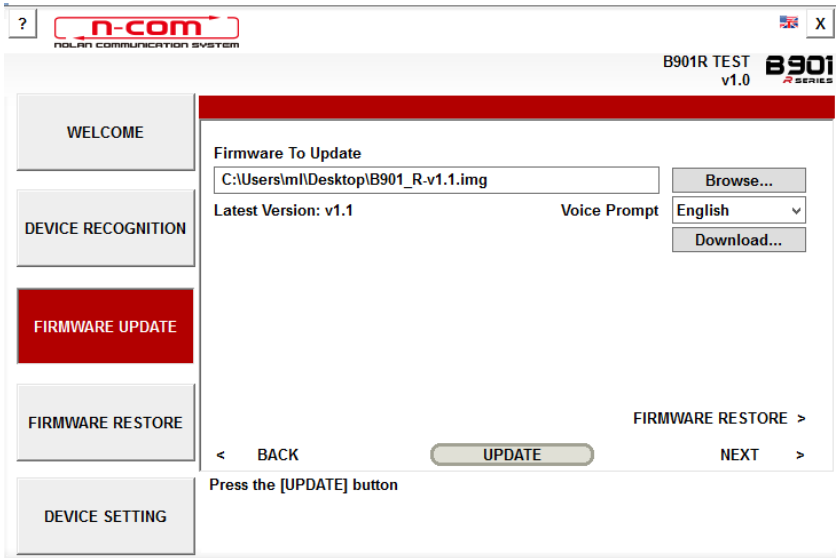


Img. 9



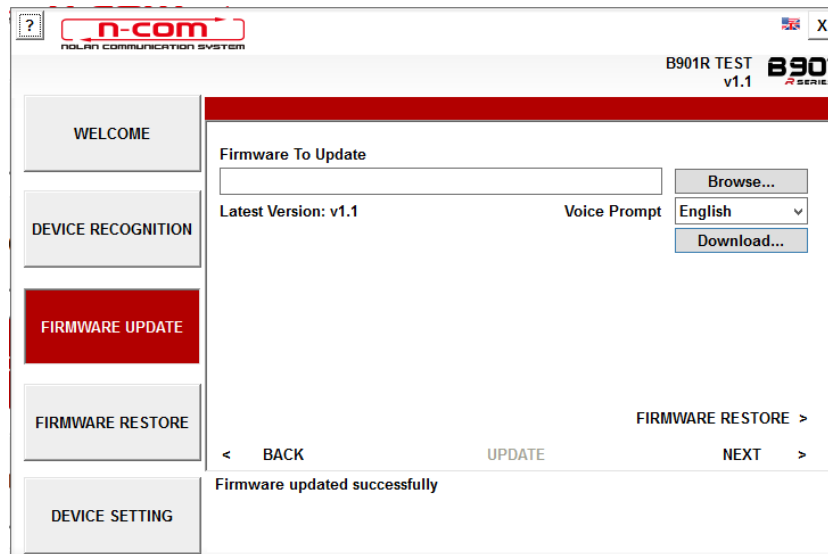
Img. 10

- The downloaded ".img" file is now visible in the box "Firmware to be updated".



Img. 11

- Press the **"UPDATE"** button. The firmware update procedure will now start.
3. Once the procedure is finished, the updated firmware version is displayed at the top right, near the product logo.



Img. 12

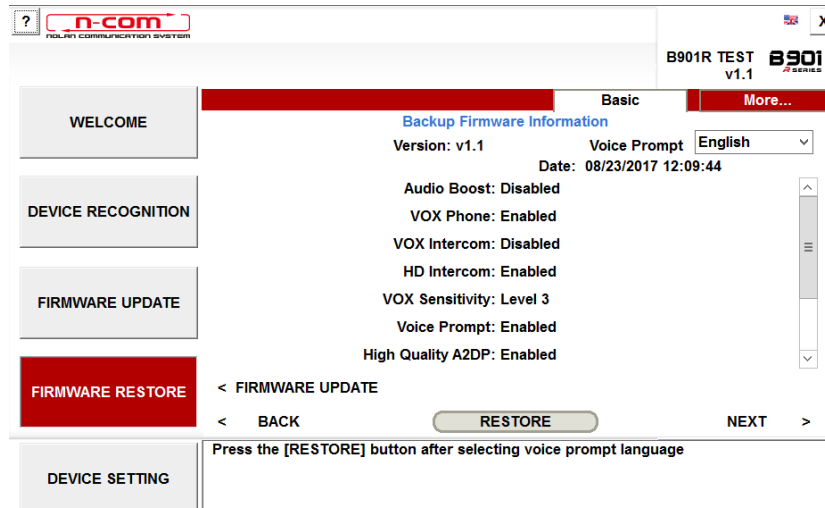
To stop using N-Com Easyset, close the application, disconnecting first the USB from the computer and then the connector connected to the helmet.



## RESTORING THE FIRMWARE

Screen from which to restore the firmware.

If necessary, you can restore on the N-Com system the Firmware previously installed on your device and the settings saved on the previous Firmware version.



Img. 13

Proceed as follows:

- Select the language chosen for the Voice Messages
- confirm the start of the update by pressing the "RESTORE" key
- wait for the end of the update

**IMPORTANT:** Do not disconnect the N-Com system from the PC while the firmware is in the update phase. Do not close the N-Com Easyset program while the firmware is being updated.

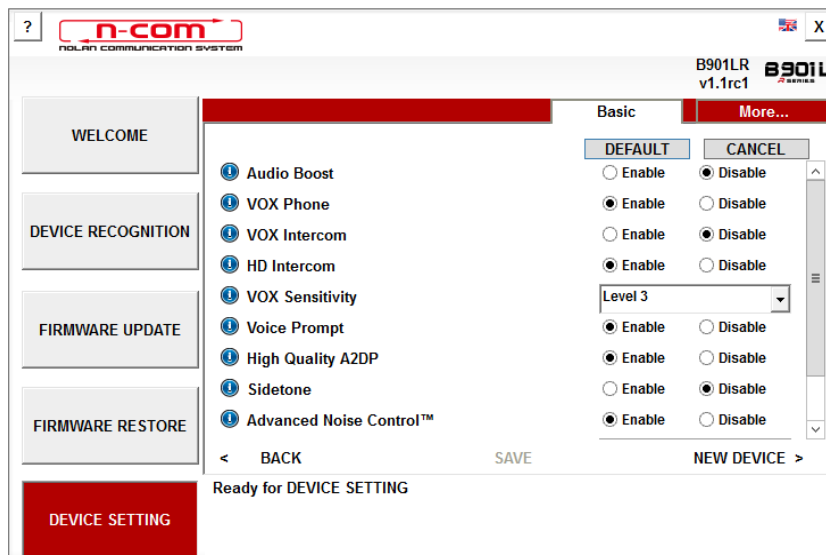
## DEVICE SETTINGS

Screen from which to adjust and configure the N-Com system.

Click on **"INCREASE"** in order to display all the available items (BASE / SPEED DIALLING / RADIO FM).

### BASE

In this section, you can enable/disable the listed functions. Click on the icon "i" at the side of each item for additional information.



Img. 14

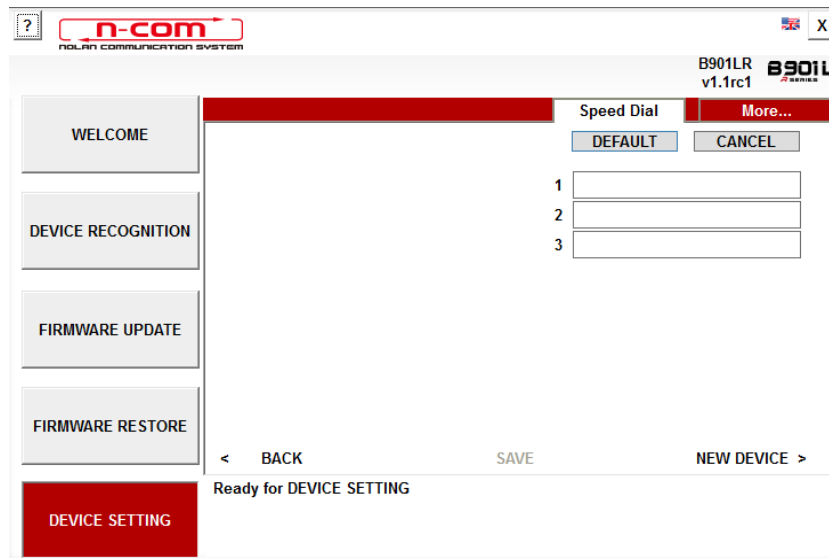
You can set various parameters according to your personal needs or restore the default levels. The new settings are sent to the N-Com system connected by means of a USB port, and become operative only after the **"SAVE"** key is pressed.

Click on the "i" icon next to each item for an explanation of the parameter that can be edited.

In case of incorrect setting, you can nevertheless restore the factory settings by pressing the **"DEFAULT"** key.

### SPEED DIALLING

You can set up to 3 telephone numbers that can be speed dialled by the N-Com system through a special key (see the operating instructions). Enter your "favourite" telephone numbers in the specific field and confirm by pressing **"SAVE"**.

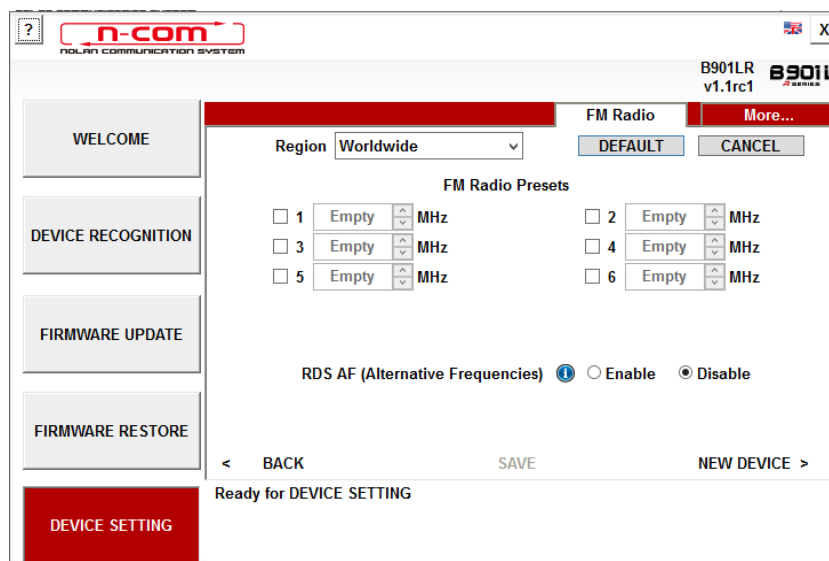


Img. 15

When you press "DEFAULT", all the stored telephone numbers will be deleted.

### FM RADIO

In this section, you can search for and store your favourite FM radio stations.



Img. 16

#### *Pre-setting a radio station*

The six pre-setting pushbuttons allow you to select and store the radio stations in the respective positions.

1. Select the pre-setting field in which to enter the frequency to be stored.
2. Enter the number of the desired frequency directly in the special space, or use the pushbuttons located at the side of the box.
3. Press "SAVE" to complete the pre-setting procedure.

When you press "DEFAULT", all six pre-settings will be deleted.

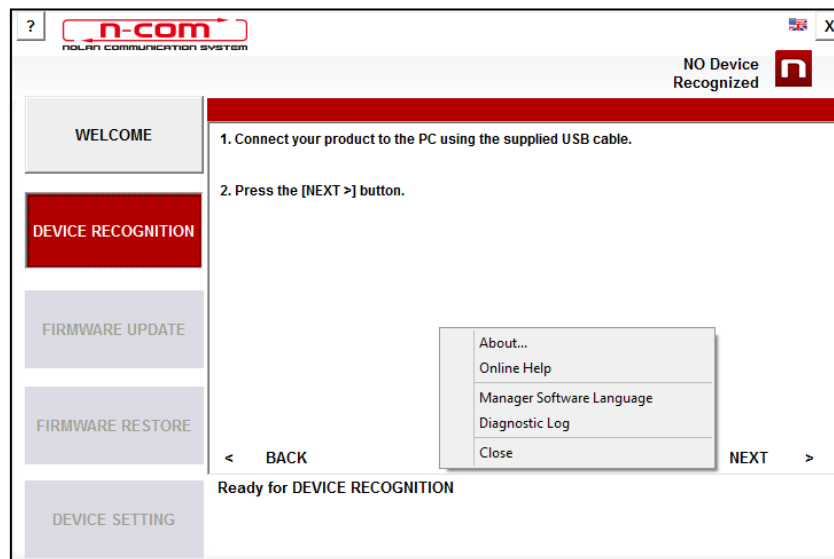
#### *Switching on / off the RDS*

The RDS allows you to automatically search the radio station you are listening to on another frequency in case the signal is lost due to poor reception.

By selecting the box at the side of the caption "Switch on RDS", you can switch on / off the RDS function of the N-Com system FM radio.

## MISCELLANEOUS

The following menu appears by right-clicking on any screen of the “N-Com Easyset” program:



Img. 17

### INFO ABOUT:

This window provides information about the “N-Com Easyset” program.

### HELP ONLINE:

This allows you to connect to the dedicated Help online.

### “N-COM EASYSET” LANGUAGE:

This allows you to change the language of the “N-Com Easyset” program.

### DIAGNOSTIC LOG:

In case of problems when using the N-Com Easyset program, the “DIAGNOSTIC LOG” allows you to display a code to be sent to Customer Service at the e-mail address [info@n-com.it](mailto:info@n-com.it) to receive technical assistance.